

The background features a light blue gradient with several overlapping, semi-transparent circles. A central graphic consists of multiple thick, wavy lines in shades of orange, green, blue, and yellow, creating a sense of motion. A faint, stylized bee logo is visible in the center, overlaid on the wavy lines.

# **ICKNIELD HIGH SCHOOL**

## **UNIFORM REQUIREMENTS**

**Current  
September 2014—July 2019**

## **GIRLS' UNIFORM – ALL STUDENTS**

Medium (not dark) grey skirt of plain material (no slits or decoration of any kind) - reasonably close to the knee in length or medium (not dark) grey full-length trousers of plain material. They may not be excessively over-sized or skin tight – no large buttons;

Plain white traditional school shirt with collar to take a tie.

School tie with Year stripe (worn to touch the belt/top of trousers or skirt);

School blazer (black) with School Badge on breast pocket;

Plain black shoes (no trainers; sensible heels only; no canvas shoes, sandals or sling backs). Small ankle boots may be worn but must be inside/underneath trousers and not visible. They may not be worn with skirts;

Plain white or dark socks (not patterned) or black tights.

Optional

Plain 'V' neck medium grey pullover (no cardigans),

Medium grey shalwar kameez,

Black school approved pull on headscarf conforming to the requirements below:

The headscarf must be worn so that the collar and tie can be seen clearly. The reason for wearing the headscarf is to preserve modesty, therefore they should not be worn with headbands, brooches, shadow stripes, logos diamantes or tassels.

All years – **must** wear pull on headscarves.

School approved headscarves can be purchased from the school or Amsons, 209 Dunstable Road.

Red Sweatshirt with Icknield motif available from Prestige

## **BOYS' UNIFORM – ALL STUDENTS**

Plain medium (not dark) grey trousers. (Black or dark grey trousers are NOT acceptable neither must they be massively over-sized);

Plain white traditional school shirt with collar to take a tie;

School blazer (black) with School Badge on breast pocket;

School tie with Year stripe (worn to touch the belt);

Plain black leather shoes. Small ankle boots may be worn but must be inside/underneath trousers and not visible.

(No trainers, sandals or canvas shoes);

Plain dark or white socks (not patterned or bright).

Optional

Plain 'V' neck medium grey pullover (no cardigans);

Red Sweatshirt with Icknield motif available from Prestige

School approved head coverings (for example turbans, juras or phatkas) which must be black.

### **Additionally all students require:-**

Red Polo Shirt

Plain black shorts - No piping, stripes or flashes, brand logo acceptable

Red Football/Hockey Socks

White ankle socks

Training shoes with laces (velcro not acceptable). Non-marking soles

Shin Pads

Mouth Guards (gum shields) are strongly recommended for all players at all levels (Rugby)

All students (boys and girls) will now also need:

Football boots with studs - NO BLADES, the boys will need to change the studs for Rugby and fit safety studs marked with British kite mark.

Optional Items

Red /Black Tracksuit Top available Trutex

Plain Black Tracksuit bottoms

School Approved Headscarf

The stockists for the Icknield specific uniform (for example blazer, tie and some parts of the PE kit) are:

Prestige

Unit 12, Barton Ind. Estate

Faldo Road, Barton Le Clay

MK45 4RP

Tel Luton 883222

web site: [www.prestigedesignwww.co.uk](http://www.prestigedesignwww.co.uk)

Items such as medium grey trousers/skirts, white shirts, and plain black shorts for example may be purchased from any high street or market outlet.

Parents who wish to purchase a made up shalwar kameez or material to make up their own, **must** ensure that it is in the approved school material which is available from:

Begees

10 Leagrave Road

Bury Park

Tel Luton 720351

Please do **not** make up this item using other material or designs as they will not comply with school regulations. If you wish to make up your own, a design pattern is available from the school which **must be adhered to**.

## UNIFORM AND SPORTS KIT

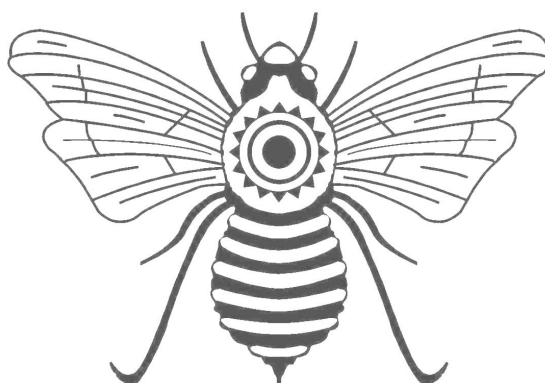
Students must wear full school uniform (including acceptable footwear) on all school occasions, and on the way to and from school. School uniform is an important feature of Icknield High School, and **on accepting a place for your child at the school you agree to support us in this matter.** Your child coming to and from school is a walking advertisement for the school and their uniform and behaviour should under no circumstances bring the school into disrepute. School authority over its students extends beyond the school gates and disciplinary penalties will be applied to students who let the school down.

### IMPORTANT NOTES

- i) We do not allow extremes of hairstyle (in either length, colour, borders, lines, patterns or decoration). Eyebrow patterns are not allowed.
- ii) Items such as extensions must be reasonable and comply with safety regulations.
- iii) Students must not wear jewellery of any kind except: (a) a wrist watch; and (b) one small pair of plain gold or silver stud earrings in the ears.
- iv) We do not allow any make-up (including nail varnish or false nails) which is noticeable.
- v) No variations from, or adaptations or additions to this dress list are allowed.
- vi) Students may wear the optional grey school jumper underneath their blazers but under no circumstances (if they are hot) is the blazer to come off leaving the jumper on. The jumper comes off first.
- vii) Visible body piercings are not allowed. Internal or non-visible body piercings will be subject to safe practice and health and safety requirements. We wish to treat all students with respect and to acknowledge that they are young adults growing up. Therefore, they have a responsibility towards wearing our uniform properly and ensuring that where phrases such as "which is noticeable", "extremes" or "reasonable" appear, they follow these instructions in the spirit they are intended. The school reserves the right, without question, to determine the exact meaning of these words.

Uniform must be worn properly at all times including coming to and from school. Un-tucked shirts, short ties, scruffy over length, skinny or skin tight trousers or skirts, fishnet tights or excessively short skirts and any other aberrations which bring the school's uniform into disrepute are not allowed. Students should wear a uniform as though they were going to a job interview. This is a mixed school including students of all races, religions, cultures and backgrounds; to this end, as part of the Respect agenda we expect student to dress modestly and this means for example that excessively short skirts or tight trousers are not permitted.

**Students whose uniform does not match requirements will not be allowed to access normal lessons or free time. Persistent, open defiance of the uniform regulations will be deemed a breach of school discipline and may be actioned by a fixed term exclusion**



The Icknield High School uniform and the way it is worn is a key part of the ethos of the school.

The following groups were consulted during our Uniform Consultation which was conducted during the spring and summer term 2014.

**Icknield High School**

Students  
Student Voice  
Teachers  
Non-teaching staff  
Governors

**Local Community**

Parents  
Parents of prospective students  
Luton Local Authority  
Luton Council of Mosques  
Individual and community groups

The uniform requirements were subsequently ratified by the Governing Body of Icknield High School in July 2014.

In accepting a place at Icknield High School parents and students are committing themselves to the guidelines in this booklet.